



Dust Containment Systems

Edger Dust Containment

All Eliminator systems come standard with super-long-life, oversized, single-element primary filters that are 99.9% efficient @ 0.5 micron. In normal operation with periodic cleaning, your filters may never need replacement for the life of the machine. With optional HEPA filtration, any Eliminator system will yield 99.97% efficiency @ 0.3 micron.



Model	Voltage	Max. Number of machines at one time	1 machine Max. Hose length/machine	2 machines Max. hose length/machine	3 machines Max. hose length/machine	System Includes
Edger II**	110*	2 Edgers/Buffers	100'	25'	N/A	(2) 2" x 25' hose; (1) "Y" manifold; (1) 2"-1.5" reducer
Edger II**	220	3 Edgers/Buffers	200'	100'	50'	(1) 3" x 25' hoses, (4) 2" x 25' hoses, (1) "Y" manifold; (2) 2"-1.5" reducers

*220 volt available.

** "Super" quiet motor silencer available. HEPA Filtration available on all models.

Twenty Years of Field Proven Technology

The Eliminator z (Dust Filtration Systems) capture and filter the wood dust produced by floor sanding equipment before it becomes an airborne nuisance and health hazard. All machines filter 99.9% down to .5 microns and carry a 3 year warranty. Our durable filters last for years without changing.

Eliminator Series

The Eliminator DFS (Dust Filtration System) Series captures the large amounts of wood dust produced by drum sanders & edgers before it becomes an airborne nuisance and health hazard.



Model	Voltage	Max. Number of machines at one time	1 machine Max. Hose length/machine	2 machines Max. hose length/machine	3 machines Max. hose length/machine	System Includes
Eliminator 2000**	110*	1 Drum Sander	100'	2 Edgers/25'	N/A	(4) 2" x 25' hoses; (1) 2"-1.5" reducer; (10) Collection bags
Eliminator 3000-110	110	1 Drum Sander/ 1 Edger	100'	50'	N/A	(1) 3" x 25' hoses; (3) 2" x 25' hoses; (1) "Y" manifold; (1) 2"-1.5" reducer;(10) Collection bags
Eliminator 3000-220	220***	1 Drum Sander/ 1 Edger	200'	150'	3 Edgers/50'	(1) 3" x 25' hoses; (3) 2" x 25' hoses; (1) "Y" manifold; (1) 2"-1.5" reducer;(10) Collection bags
Eliminator 4000	220***	1 Drum Sander/ 2 Edger	300'	150'	100'	(3) 3" x 25' hoses; (9) 2" x 25' hoses; (1) "Y" manifold; (3) 2"-1.5" reducer;(10) Collection bags

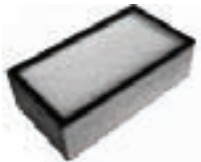
*220 volt available. ** "Super" quiet motor silencer available. ***Gasoline Motor deck available. HEPA Filtration available on all models. Specifications subject to change.

Accessories



FILTER

20091 Filter, 13 Sq. Ft., 1.2M2, WS/D1
30091 Filter, 28 Sq. Ft., 2.6 M2, DS1
32970 48 Square Foot Filter



HEPA FILTER

35211 HEPA Filter 40 Sq. Ft., WS/D1
30122 DS2 HEPA Filter



HOSE ADAPTER

5222 Hose adapter, 2"-1.5"



CONNECTOR

5220 2" Inlet to hose connector



Y ADAPTER

90119 Y Adapter, 1.5"x1.5"x1.5"
90121 Y Adapter, 2"x1.5"x1.5"
90120 Y Adapter, 2"x2"x2"

WASTE BAGS

970500-01 Waste Collection bag, 6 mil
970500 Waste Collection bags, 6 mil,
roll of 100



PALM SANDER MANIFOLD

9715 Manifold with Flap Valve,
1.25"x1.25"x2" with Button Lock



INLET REDUCER

30009 Inlet Reducer, 70mm-50mm
30024 Inlet Reducer, 100mm-70mm



HOSE

209525 Hose, 1.25"x25', Plastic,
Crush resistant
501425-LEC Hose, 2"x25', Plastic,
Crush resistant
701425-LEC Hose, 3"x 25', Plastic,
Crush resistant
5014D Hose Reducer, 2" - 1.5"



HOSE REELS

Hose reels available, various
capacities



WAND

3502 54" Wand, 2-piece
Aluminum Shaft

HOSE CARRY BAG

50-6897 Hose Carry Bag



CREVICE TOOL

350711 11" Crevice Tool, Gray
Plastic



FLOOR TOOL

3513 14" Floor Tool, Felt Bladed,
ABS Plastic Body



FLOOR TOOL

3512H 14" Floor Brush, Horsehair
Bristles, ABS Plastic Body



Power Booster 60 AMP

#LEC-60PB Hook up 220 single
phase power to our 60 amp booster
and have (2) 220 single phase sources
available to run your drum sander
and your dust filtration system



OPTIONAL MOTORS

Gasoline powered motors available

